

4

3

2

1

THIS DRAWING IS UNPUBLISHED.

RELEASED FOR PUBLICATION

MAR ,2014.

© COPYRIGHT 2014 By Tyco Electronics Japan G.K.

ALL RIGHTS RESERVED.

LOC

DIST

REVISIONS

P

LTR

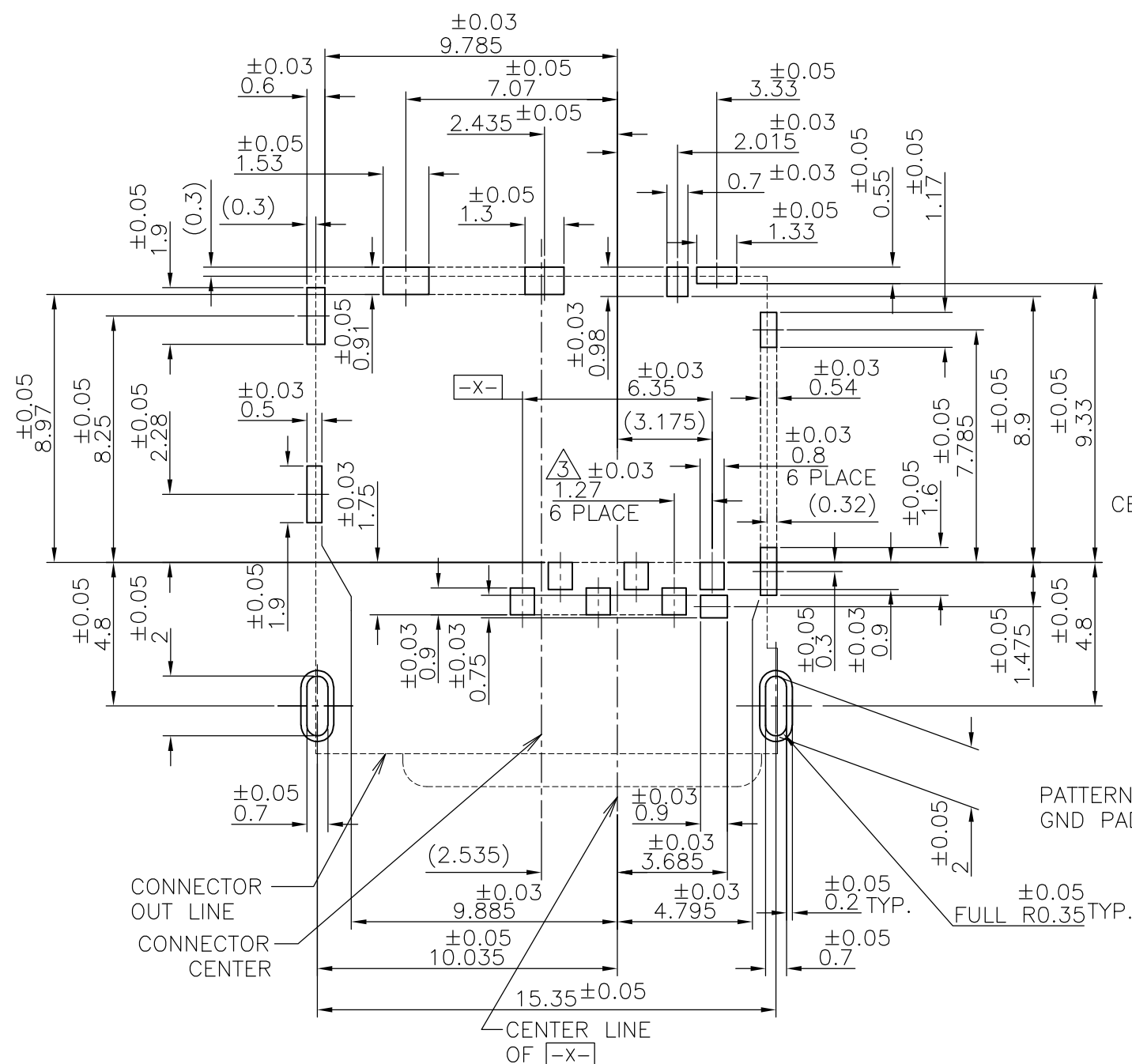
DESCRIPTION

DATE

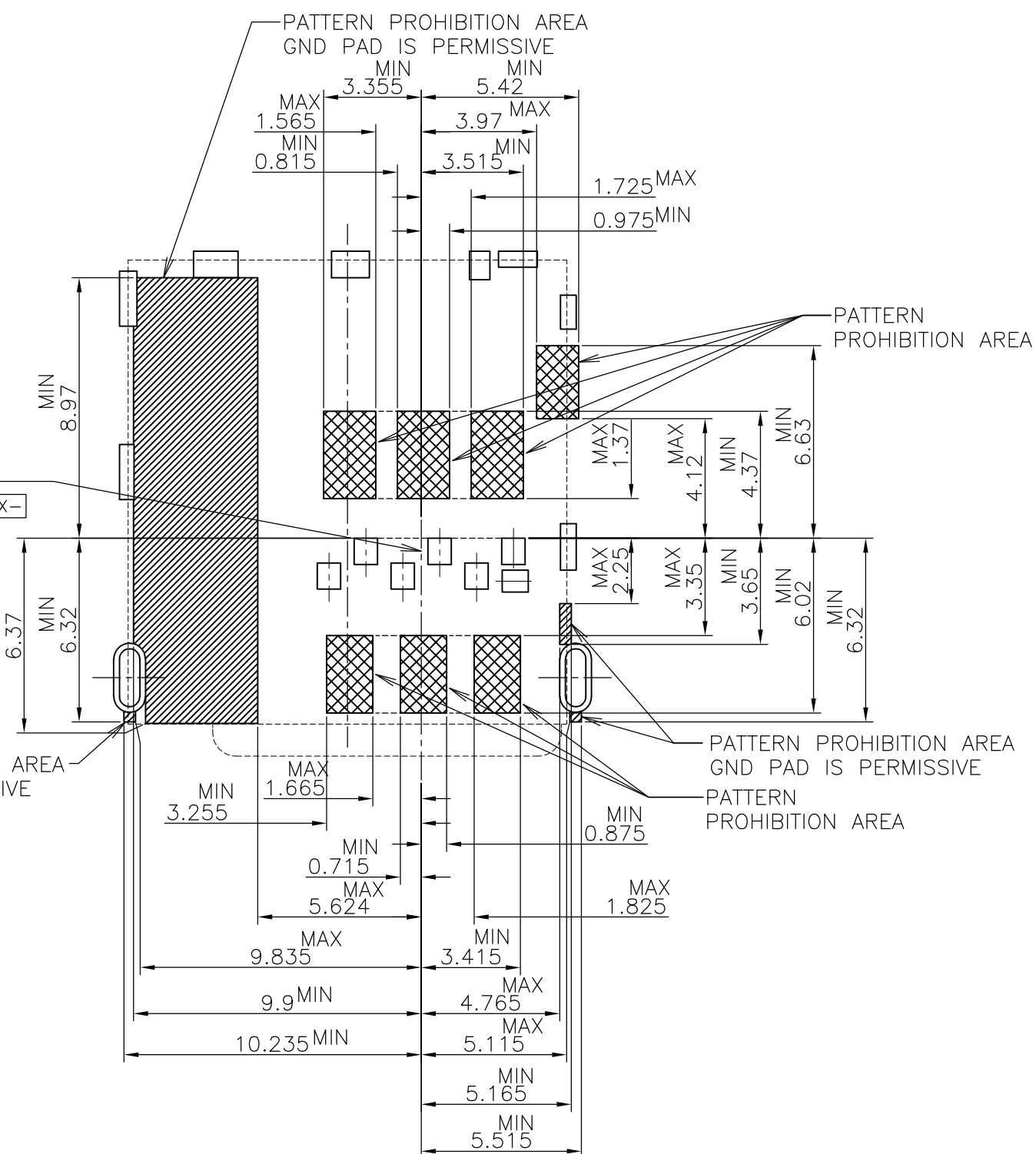
DWN

APVD

SEE SHEET 1

CENTER LINE
OF -X-PATTERN PROHIBITION AREA
GND PAD IS PERMISSIVE

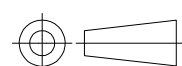
FULL R0.35TYP.



THIS DRAWING IS A CONTROLLED DOCUMENT.

DIMENSIONS:

mm

TOLERANCES UNLESS
OTHERWISE SPECIFIED:

0 PLC	± -
1 PLC	± -
2 PLC	± -
3 PLC	± -
4 PLC	± -
ANGLES	± -
FINISH	± -

MATERIAL

DWN

CHK

APVD

PRODUCT SPEC

APPLICATION SPEC

WEIGHT

NAME

MICRO SIM CONNECTOR
PUSH-PUSH DIP TYPE

SIZE

CAGE CODE

DRAWING NO

RESTRICTED TO

A300779

C-2822541

CUSTOMER DRAWING

SCALE 5:1

SHEET 2 OF 5

REV B

4

3

2

1

THIS DRAWING IS UNPUBLISHED.

RELEASED FOR PUBLICATION

MAR , 2014.

© COPYRIGHT 2014 By Tyco Electronics Japan G.K.

ALL RIGHTS RESERVED.

LOC

J

DIST

REVISIONS

P	LTR	DESCRIPTION	DATE	DWN	APVD
	-	SEE SHEET 1	-	-	-

Connector Pin Assignment

No.	Pin Name	Description
①	C1	Vcc of SIM
②	C2	RST of SIM
③	C3	CLK of SIM
④	C5	GND of SIM
⑤	C6	Vpp of SIM
⑥	C7	I/O of SIM
⑦	SW	Detection Switch
⑧~⑰	GND	Shell Ground

SIM Card Pin Assignment

Pin No.	Name
C1	Vcc
C2	RST
C3	CLK
C4	Reserved
C5	GND
C6	Vpp
C7	I/O
C8	Reserved

PCB LAYOUT(REFERENCE)
(VIEWED FROM CONNECTOR MOUNT SIDE)

SIM CARD PAD LAYOUT

CIRCUIT DRAWING OF SWITCH

DETECTION SWITCH(SW1)

CARD REMOVAL: CLOSE

CARD INSERTION: OPEN

GND (SHELL)

THIS DIAGRAM SHOWS CARD INSERTION (OPEN) CONDITION

THIS DRAWING IS A CONTROLLED DOCUMENT.

DIMENSIONS:

mm

TOLERANCES UNLESS OTHERWISE SPECIFIED:

0 PLC	± -
1 PLC	± -
2 PLC	± -
3 PLC	± -
4 PLC	± -
ANGLES	± -
FINISH	

MATERIAL

DWN

CHK

APVD

PRODUCT SPEC

APPLICATION SPEC

WEIGHT

TE Connectivity

NAME

MICRO SIM CONNECTOR
PUSH-PUSH DIP TYPE

SIZE

CAGE CODE

DRAWING NO

RESTRICTED TO

A3

00779

C=2822541

CUSTOMER DRAWING

SCALE

NTS

SHEET

3 OF 5

REV

B

1470-19 (3/11)

THIS DRAWING IS UNPUBLISHED.

RELEASED FOR PUBLICATION

MAR , 2014.

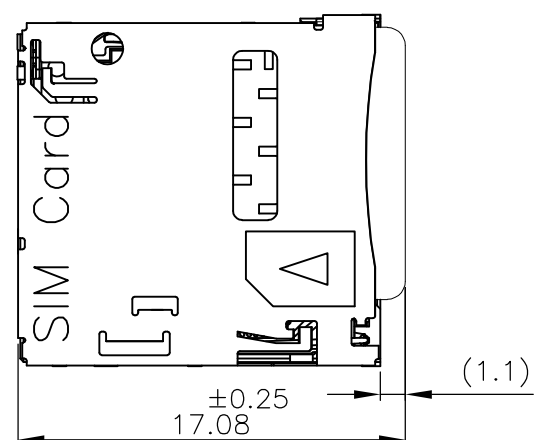
© COPYRIGHT 2014 By Tyco Electronics Japan G.K.

ALL RIGHTS RESERVED.

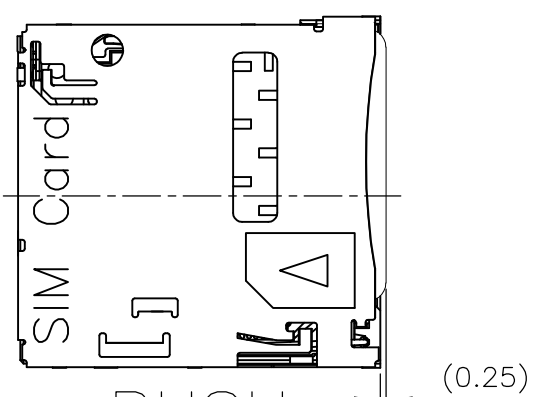
LOC
JDIST
/

REVISIONS

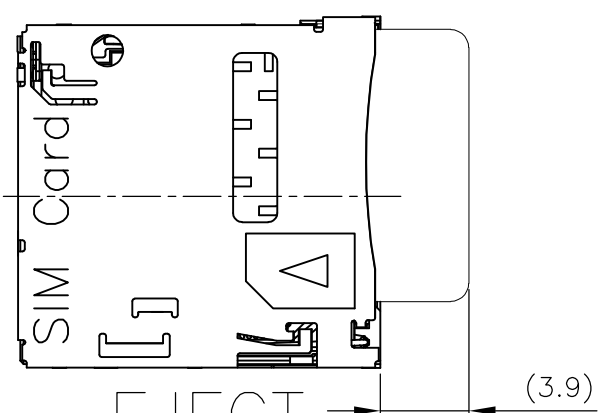
P	LTR	DESCRIPTION	DATE	DWN	APVD
	-	SEE SHEET 1	-	-	-



MATING



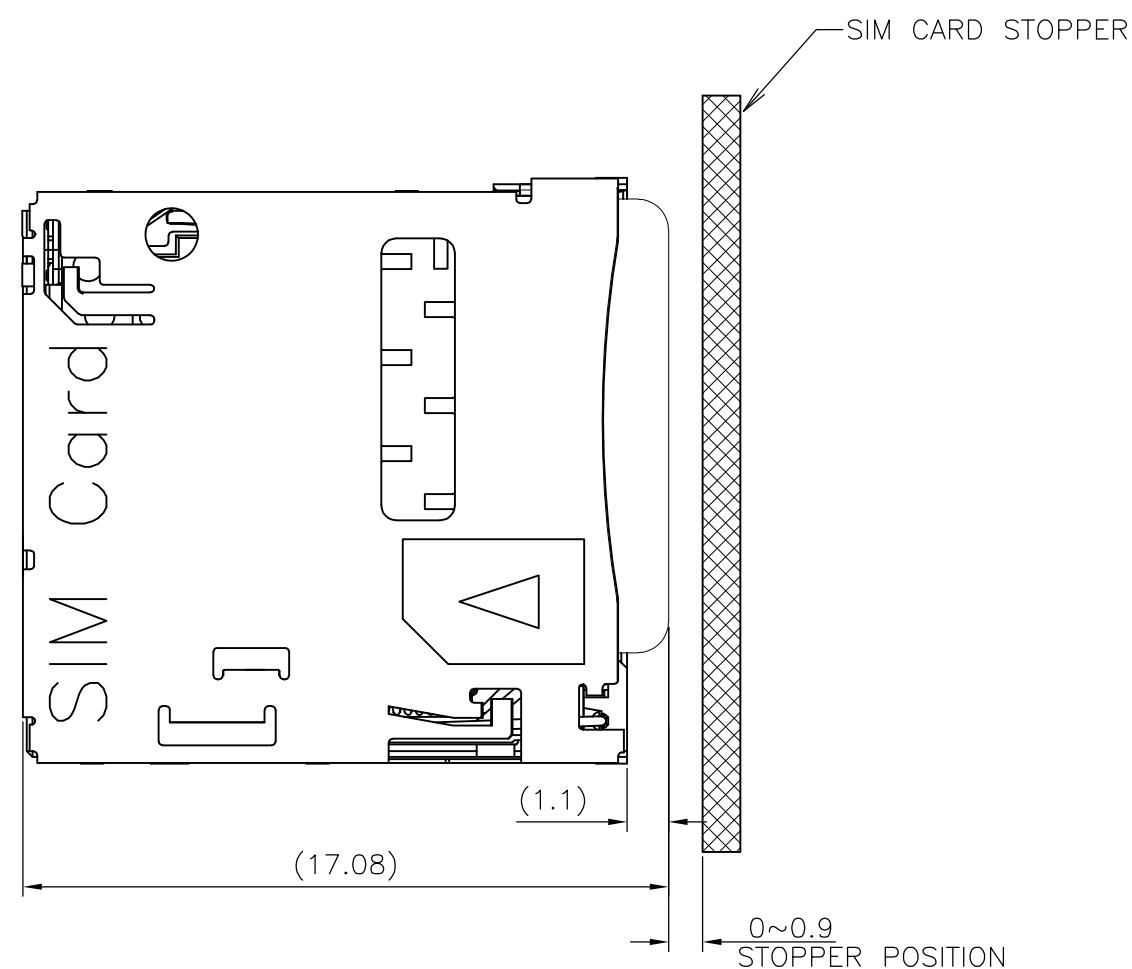
PUSH



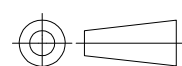
EJECT

SCALE 3:1

THERE IS NO MICRO SIM CARD LOCK IN THIS CONNECTOR.
CARD STOPPER AS SHOWN BELOW MUST BE NECESSARY.



THIS DRAWING IS A CONTROLLED DOCUMENT.

DIMENSIONS:
mmTOLERANCES UNLESS
OTHERWISE SPECIFIED:

0 PLC $\pm -$
1 PLC $\pm -$
2 PLC $\pm -$
3 PLC $\pm -$
4 PLC $\pm -$
ANGLES $\pm -$
FINISH

MATERIAL

DWN

CHK

APVD

PRODUCT SPEC

APPLICATION SPEC

WEIGHT

CUSTOMER DRAWING

STE

TE Connectivity

NAME

MICRO SIM CONNECTOR
PUSH-PUSH DIP TYPE

SIZE

CAGE CODE

DRAWING NO

RESTRICTED TO

A3 00779

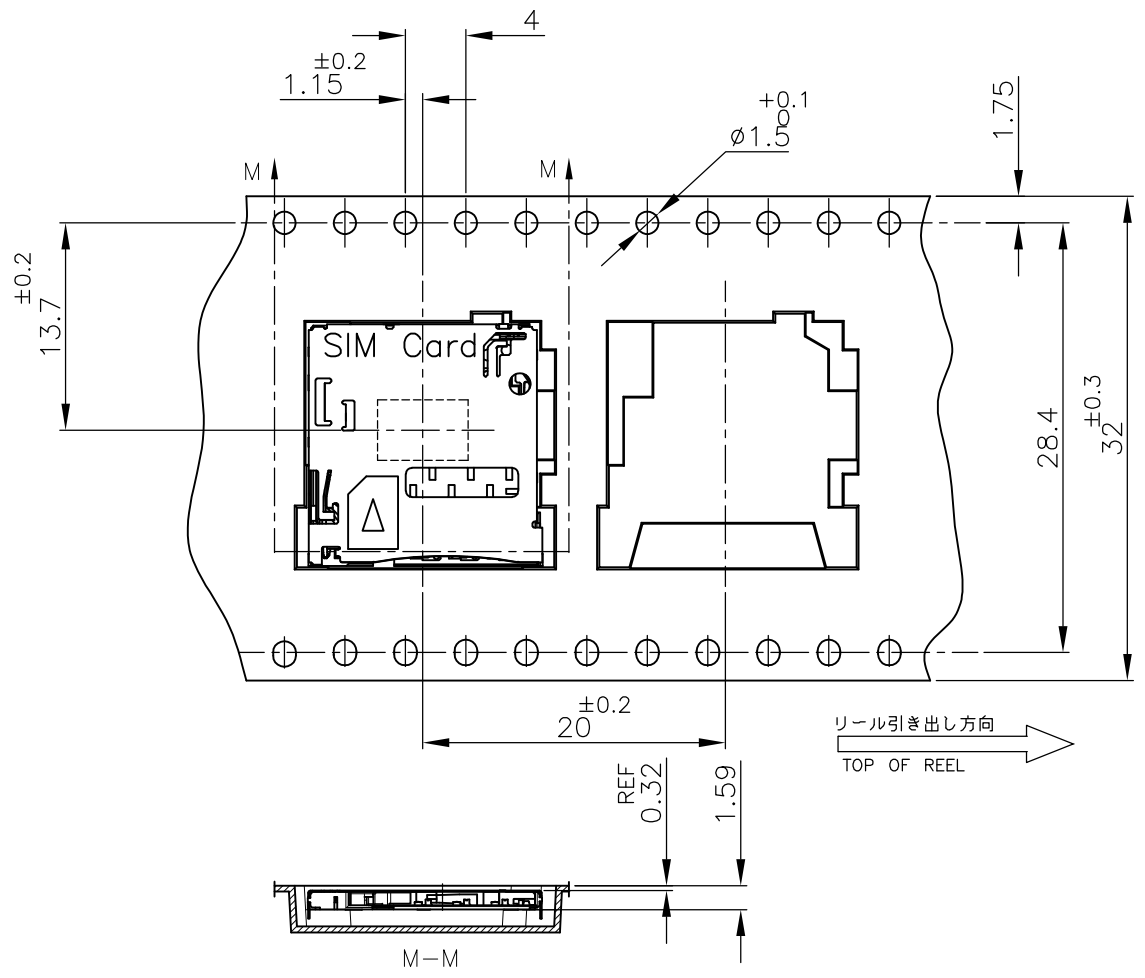
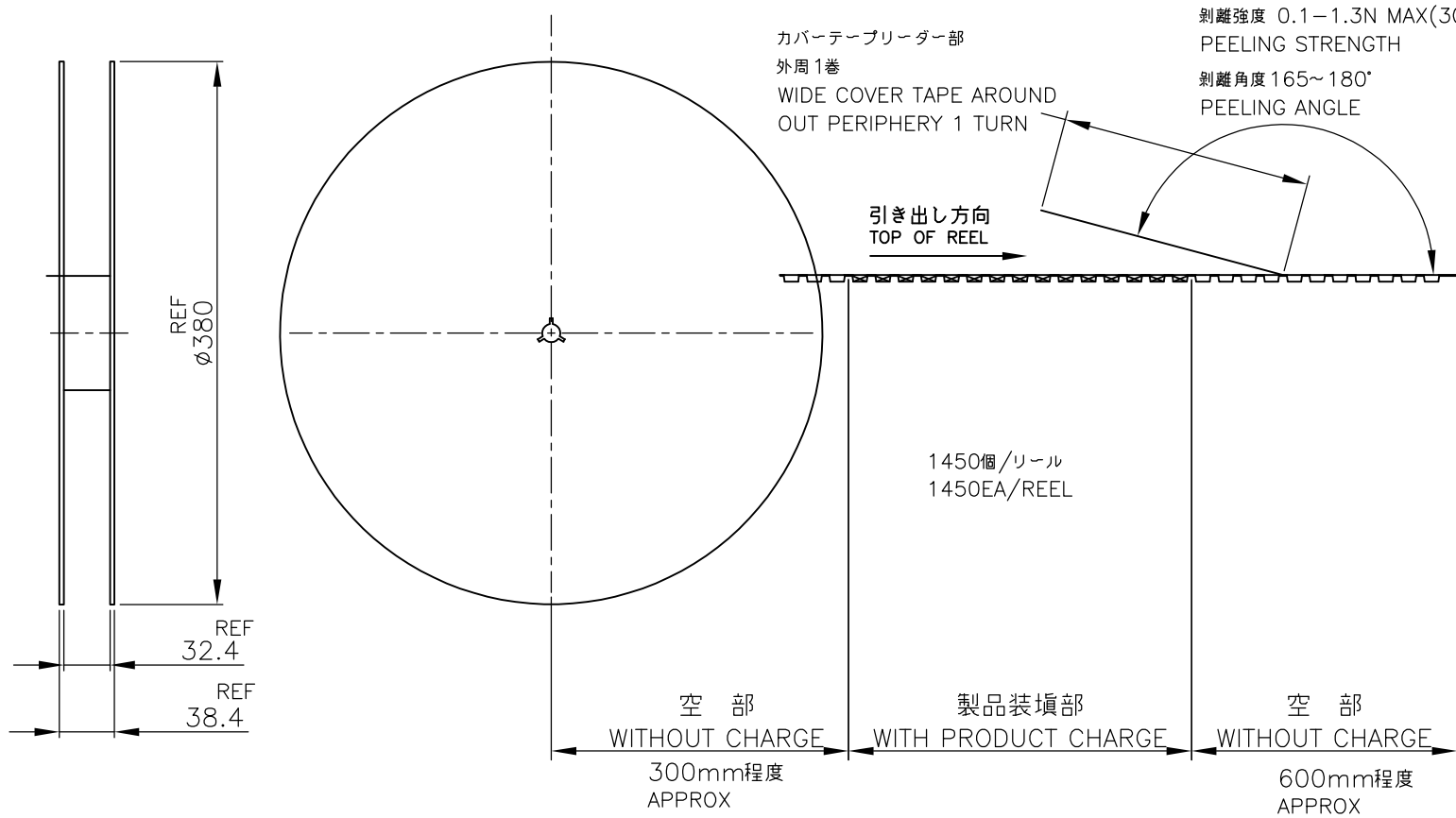
C-2822541

SCALE 5:1

SHEET 4 OF 5

REV B

2		1				
LOC	DIST	REVISIONS				
P	LTR	DESCRIPTION		DATE	DWN	APVD
	-	SEE SHEET 1		-	-	-



THIS DRAWING IS A CONTROLLED DOCUMENT.

DIMENSIONS:
mm

MATERIAL

TOLERANCES UNLESS
OTHERWISE SPECIFIED:

0 PLC ± -

1 PLC ± -

2 PLC ± -

3 PLC ± -

4 PLC ± -

ANGLES ± -

FINISH ± -

DWN

CHK

APVD

PRODUCT SPEC

APPLICATION SPEC

WEIGHT

TE Connectivity

NAME

MICRO SIM CONNECTOR
PUSH-PUSH DIP TYPE

SIZE

CAGE CODE

DRAWING NO

RESTRICTED TO

A300779

C=2822541

CUSTOMER DRAWING

SCALE
NTS

SHEET
5 OF 5

REV
B

Mouser Electronics

Authorized Distributor

Click to View Pricing, Inventory, Delivery & Lifecycle Information:

[TE Connectivity:](#)

[2822541-1](#)