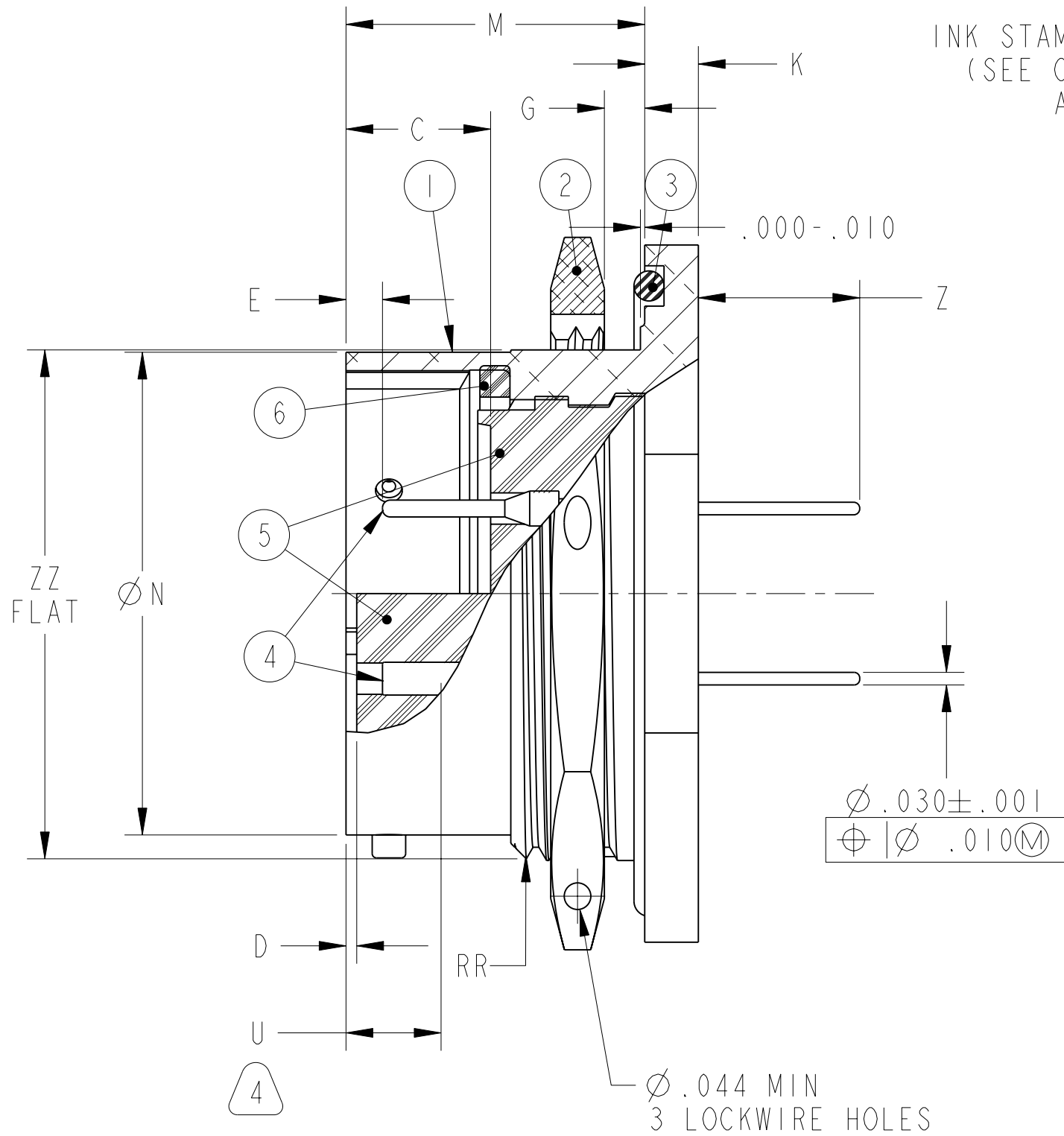
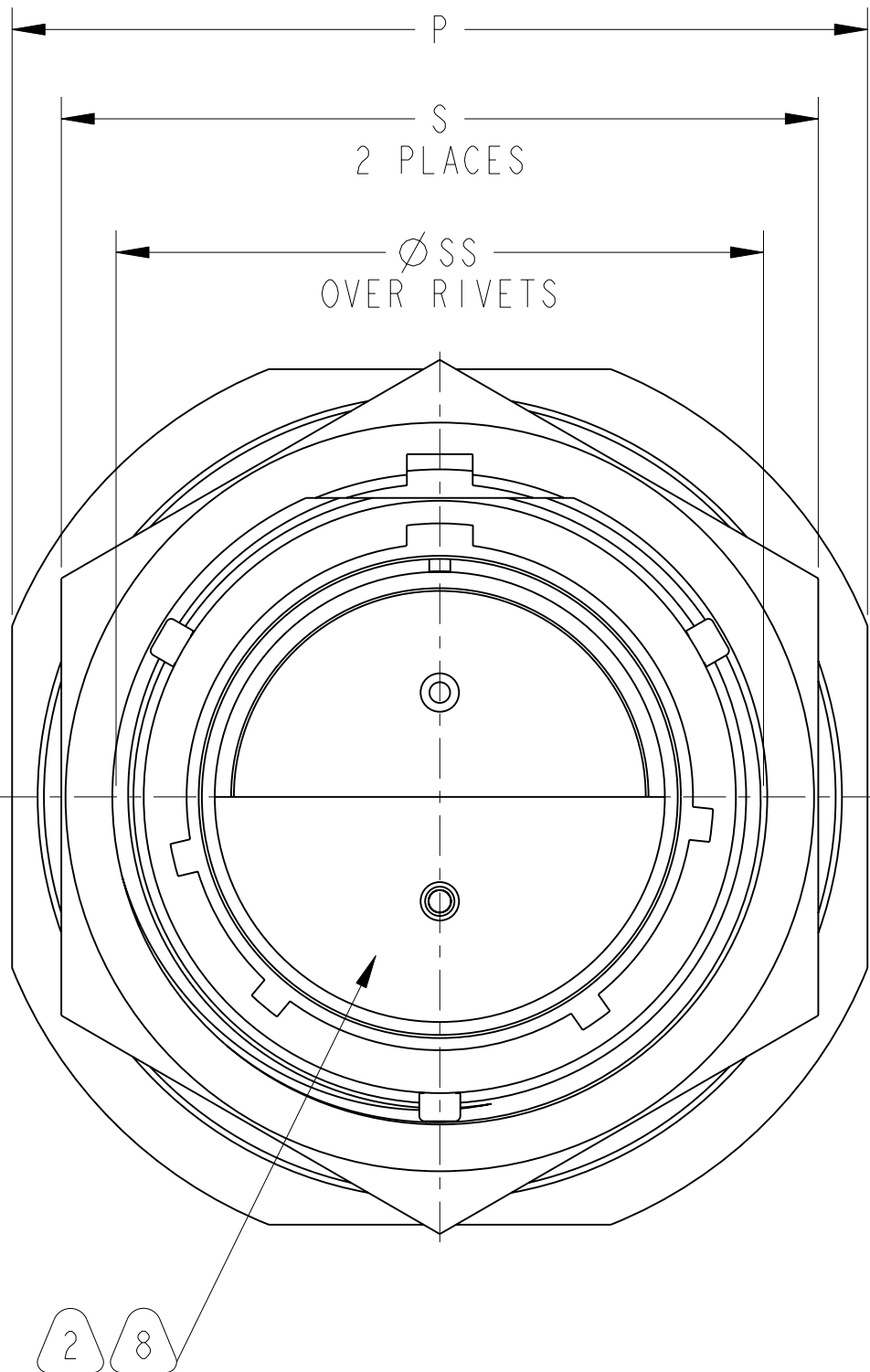
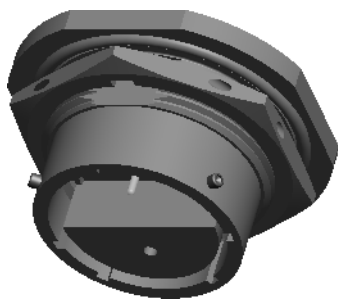
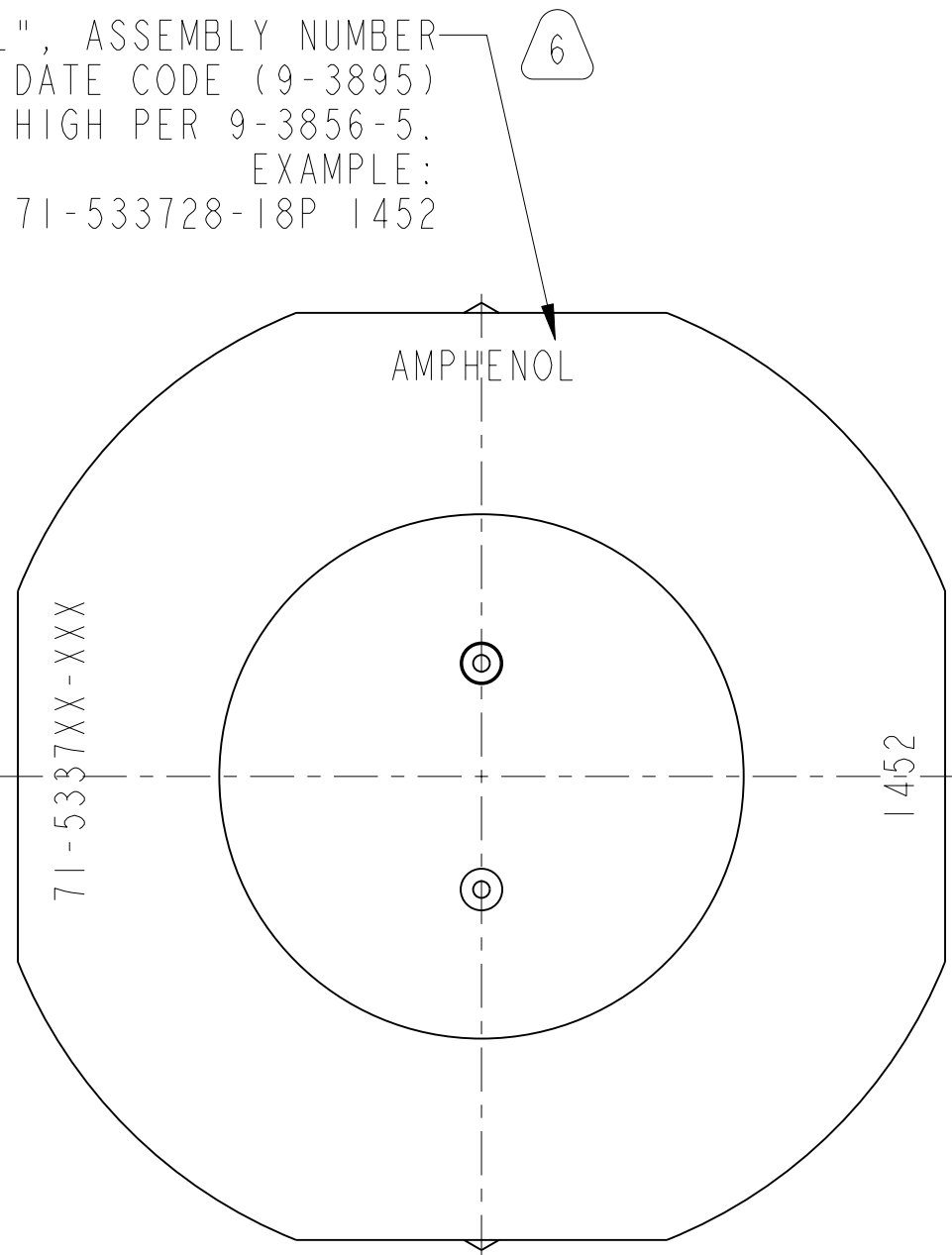


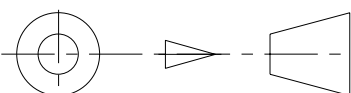
71-533720/729	SHEET 1 OF 2	REV. G
REVISIONS		
LTR	DESCRIPTION	DATE
G	(CLII) SEE ECN: C3494	1/20/17 Prescott



INK STAMP "AMPHENOL", ASSEMBLY NUMBER (SEE COLUMN) AND DATE CODE (9-3895) APPROX .047 HIGH PER 9-3856-5. EXAMPLE: AMPHENOL 71-533728-18P 1452



6	I	10-330914-XXI	GASKET	
5	I	10-1018XX-()P/S 10-2528XX-()P/S	INSERT	8
4		SEE CONTACT TABLE	CONTACTS	2, 8
3		SEE COLUMN	PACKING	9
2		10-123017-XX3	NUT	
1		10-150903-XX3	SHELL	
POS	QTY	PART NUMBER	DESCRIPTION	NOTE

PARTS LIST			
APPROVALS		DATE	
PREPARED BY L. Pratt		07-Oct-14	
ENGINEER IN CHARGE A. Prescott			
DESIGN MANAGER A. Polishak			
DESIGN ACTIVITY GROUP C & I			
THIRD ANGLE PROJECTION			
			
RECEPTACLE, ELECTRICAL CONNECTOR TYPE PT07C(), SPECIAL, OLIVE DRAB CADMIUM PLATED			
SIZE C	CAGE CODE 77820	DOCUMENT NO. 71-533720/729	REV. G
SCALE: 1.0		REF: 71-147706/750	SHEET 1 OF 2

UNLESS OTHERWISE SPECIFIED	SPECIFICATIONS
LINEAR DIMENSIONS ARE IN INCHES TOLERANCES: .XXXX = ±.0005 ANGLES= ±2° .XXX = ±.010 .XX = ±.03 .X = ±.1	MATERIAL SPEC. N/A
DIM. & TOL. PER ASME Y14.5M; DRM PER MIL-DTL-31000; OTHER Amphenol Sds. PER 9-3800	PROCESS SPEC. SEE NOTES 9 & 10
LEGENDS: =FLAG NOTE CALL OUT REFERENCE ONLY	

N/A	PRO/ENGINEER INFORMATION
N/A	Pro/e Model Used: 71-5337XXP.S.ASSEM
NEXT ASSEMBLY	Drawing Name: 71-533720_729

SEE SHEET 2

NOTES:

THE USE OF THIS DOCUMENT IS UNLIMITED. HOWEVER, DOCUMENTS REFERENCED HEREON MAY CONTAIN LIMITED RIGHTS DATA.

71-533720/729

SHEET 2 OF 2

G

DOCUMENT NO.

71-533720/729

REV.

G

4

3

2

6

REV.

2

SHEET 2 OF 2

71-533720/729

DOCUMENT NO.

ASSEMBLY NUMBER	PT NUMBER	PACKING	C +.010 -.025	D +.010 -.025	E +.010 -.020	G PANEL THICKNESS		K +.011 -.010	M	ØN +.001 -.005	P HEX +.017 -.016	S	U MAX	Z +.025 -.035	RR THREAD (PLATED) CLASS 2A	ØSS +.000 -.016	ZZ +.000 -.010	
						MIN	MAX											
71-533720-()	PT07C- 6-()	10-247918-015	.337	.025	.085	.062	.125	.125	.696	.348	.625	.812	.153	.376	.4375-28 UNEF	.439	.405	
71-533721-()	PT07C- 8-()	10-247918-017	.337	.025	.085	.062	.125	.125	.696	.473	.750	.938	.153	.376	.5625-24 UNEF	.563	.530	
71-533722-()	PT07C-10-()	10-247918-019	.337	.025	.085	.062	.125	.125	.696	.590	.875	1.062	.153	.376	.6875-24 UNEF	.680	.655	
71-533723-()	PT07C-12-()	10-247918-022	.337	.025	.085	.062	.125	.125	.696	.750	1.062	1.250	.153	.376	.8750-20 UNEF	.859	.818	
71-533724-()	PT07C-14-()	10-247918-024	.337	.025	.085	.062	.125	.125	.696	.875	1.188	1.375	.153	.376	1.0000-20 UNEF	.984	.942	
71-533725-()	PT07C-16-()	10-247918-026	.337	.025	.085	.062	.125	.125	.696	1.000	1.312	1.500	.153	.376	1.1250-18 UNEF	1.108	1.066	
71-533726-()	PT07C-18-()	10-247918-028	.337	.025	.085	.062	.125	.125	.696	1.125	1.438	1.625	.153	.376	1.2500-18 UNEF	1.233	1.191	
71-533727-()	PT07C-20-()	10-247918-128	.399	.087	.147	.062	.250	.156	.884	1.250	1.562	1.812	.215	.367	1.3750-18 UNEF	1.358	1.316	
71-533728-()	PT07C-22-()	10-247918-130	.399	.087	.147	.062	.250	.156	.884	1.375	1.688	1.938	.215	.367	1.5000-18 UNEF	1.483	1.441	
71-533729-()	PT07C-24-()	10-247918-132	.399	.087	.147	.062	.250	.156	.917	1.500	1.812	2.062	.215	.334	1.6250-18 UNEF	1.610	1.566	

3

CONTACTS

SIZE	PART NUMBER
20L PIN	10-497534-06D
20L SOCKET	10-597859-FFF
20 PIN	10-497512-06D
20 SOCKET	10-664164-FFF OR 10-497513-06D
16L PIN	10-247924-167
16L SOCKET	10-247926-167
16 PIN	10-247920-168
16 SOCKET	10-247922-168
12 PIN	10-733100-05D
12 SOCKET	—

5. SEE DRAWING 71-146606/50 FOR REQUIRED MATING PLUG ASSEMBLY.

4. INDICATED DIMIEMSION IS DISTANCE BETWEEN END OF SHELL AND THE POINT AT WHICH A GAGE PIN, HAVING THE SAME BASIC DIAMETER AS THE MATING CONTACT AND A SQUARE FACE, ENGAGES SOCKET CONTACT SPRING.

3. TO COMPLETE ASSEMBLY NUMBER AND PT NUMBER, ADD APPLICABLE INSERT ARRANGEMENT SUFFIX TO BASE NUMBERS LISTED ABOVE PER 9-2437-1.

2. FOR CONTACT ARRANGEMENTS, SEE DRAWINGS L-15206/50-().

1. UNIT ILLUSTRATED MEETS THE APPLICABLE REQUIREMENTS OF MIL-C-26482.

NOTES:

THE USE OF THIS DOCUMENT IS UNLIMITED. HOWEVER, DOCUMENTS REFERENCED HEREON MAY CONTAIN LIMITED RIGHTS DATA.

10. PROCESS SPEC:

ASSEMBLY 9-3605-1
9-2437-1, 9-3856-5, 9-3895
TEST 9-3353-1

9. FOR MAXIMUM SEALING EFFICIENCY, APPLY A LIGHT COAT OF COMPOUND (MIL-S-8660) TO PACKING.

8. INSERTS AND CONTACTS ARE NOT REMOVABLE.

7. SEE SEPERATE PARTS LIST FOR COMPONENT PART NUMBERS AND QUANTITIES.

6. SEE WORK ORDER FOR PERMISSIBLE ADDITIONAL OR ALTERNATE STAMPING.

DOCUMENT NO.

71-533720/729

REV.

G

SHEET 2 OF 2

G

IMAGED / May . 31 2017, 2:49:36 PM

2

1

71-533720/729

SHEET 2 OF 2

G

DOCUMENT NO.

71-533720/729

REV.

G

SHEET 2 OF 2

G

SCALE: 1.0

REF. 71-147706/750

SHEET 2 OF 2

Downloaded from Arrow.com