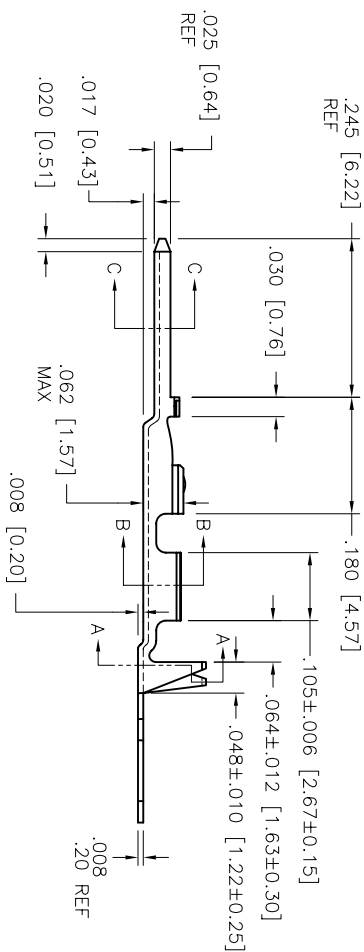
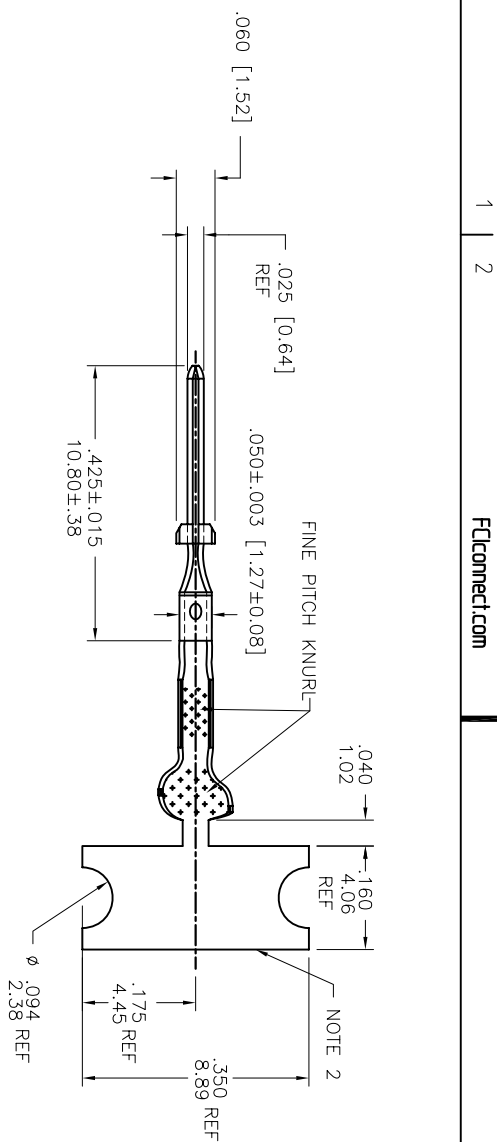


PRODUCT NUMBER
SEE SHEET 2



mat'l. code		surface		tolerance		projection		product family	
3/4 HD BRASS CDA NO. 260		✓		✓		INCH/MM		PV TERMINAL	
ltr	ecn no.	dr	date	tolerances unless otherwise specified		angles		title	
D	V41703	SAR	1994-11-30	XX ±0.01/XX±3		XX ±0.01/XX±3		CTW MALE PIN	
E	V80946	LSS	1998-06-03	XXX ±0.05/XXX±3		XXX ±0.05/XXX±3			
F	V04-0056	VS	2004-02-17	0° ±2°		XXXX ±0.020/XXX±0.051			
G	V05-0467	HTB	2005-05-23	S ROYER		1994-11-30			
H	V06-0623	HTB	2006-06-28	PIQUJ		T.HANNA			
J	V07-0218	HTB	2007-03-16	CTP		T.HANNA			
K	V08-0440	HTB	2008-10-09	BDDJ		T.HANNA			
sheet	revision	K	K	K	K	FCI		dwg no	
index	sheet	1	2	3				75653	
								sheet 1 of 3	
								size	
								A4	
								CUSTOMER Drawing	



Copyright FC



FCconnect.com

1 | 2

3 |

4

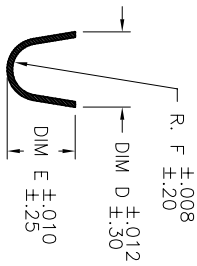
PRODUCT NO. AS REELED FOR APPLICATION MACHINES
NOTE 5

WIRE AWG

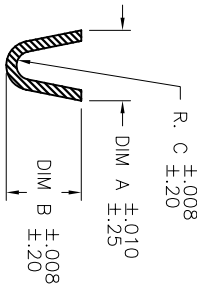
WIRE BARREL

INSULATION BARREL

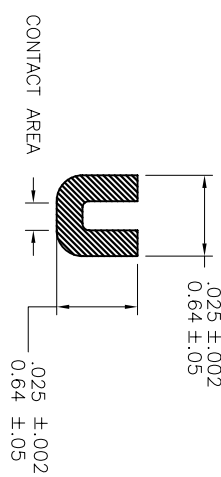
RIGHT TO LEFT FEED	LEFT TO RIGHT FEED	A	B	C	D	E	F
75653-001	75653-004	.054/1.37	.058/1.47	.011/0.28	.115/2.92	.105/2.67	.040/1.02
75653-001LF	75653-004LF	.054/1.37	.058/1.47	.011/0.28	.115/2.92	.105/2.67	.040/1.02
75653-002	75653-005	.070/1.78	.065/1.65	.017/0.43	.139/3.53	.120/3.05	.050/1.27
75653-002LF	75653-005LF	.070/1.78	.065/1.65	.017/0.43	.139/3.53	.120/3.05	.050/1.27
75653-003	75653-006	.104/2.64	.104/2.64	.021/0.53	.139/3.53	.120/3.05	.050/1.27
75653-003LF	75653-006LF	.104/2.64	.104/2.64	.021/0.53	.139/3.53	.120/3.05	.050/1.27



SECTION A-A
SCALE 2:1



SECTION B-B
SCALE 2:1



SECTION C-C
SCALE 5:1

NOTES:

1. PLATING: 100μ"/2.54μ SnPb MINIMUM PRE-PLATED (OBSOLETE)
P/N WITH LF SUFFIX: 100μ"/2.54μ Sn MINIMUM PRE-PLATED
2. FOR MANUFACTURING PURPOSES ONLY.
3. PART MAY BE USED WITH MINI-LATCH HSG.
4. APPLICABLE SPECIFICATIONS:
A. BUS-12-098: PRODUCT SPECIFICATION
B. 1A-211: CRIMP SPECIFICATION
5. PART NUMBERS WITH AN LF SUFFIX MEET EUROPEAN UNION DIRECTIVES AND OTHER COUNTRY REGULATIONS AS DESCRIBED IN GS-22-008.
6. THIS PRODUCT IS NOT INTENDED TO BE EXPOSED TO MANUFACTURING SOLDER PROCESSES.
7. THIS PRODUCT HAS 100% TIN PLATING IN THE INTERFACE AND HAS NOT BEEN TESTED FOR WHISKER GROWTH IN ALL INTERCONNECT ENVIRONMENTS.
8. PACKAGE QUANTITY: 8000 PER REEL

mat'l. code	surface	tolerance	projection	product family
3/4 HD BRASS CDA NO. 260	✓			PV TERMINAL
lbr	ecn no	date	angles	title
K			XX ±.01/XX±3	CTW MALE PIN
			XXX ±.005/XXX±3	
			0° ±2°	Scale 4/1
			S ROYER	1994-11-30
			PLUG	1994-11-30
			CLIP	1994-11-30
			T.HANNA	1994-11-30
			QDD	1994-11-30
sheet	revision			
index	sheet			



dwg no 75653 sheet 2 of 3 size A4
CUSTOMER Drawing

form: ArmmXLC

1

2

3

4

B

A

B

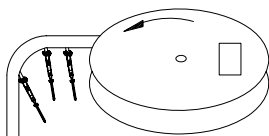
A

PRODUCT NUMBER
SEE SHEET 2

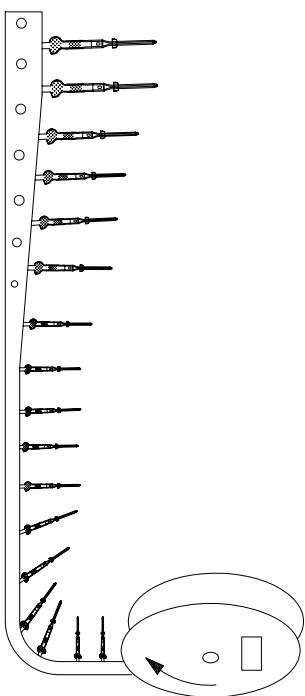
1 | 2

3

4



Unreeeling Direction
Left to Right Into
Applicator



Unreeeling Direction
Right to Left Into
Applicator

mat'l. code		surface		tolerance		projection		product family	
3/4 HD BRASS CDA NO. 260		✓						PV TERMINAL	
lfr	ecn no	dfr	date	tolerances unless otherwise specified				title	
K				angles				CTW MALE PIN	
				° ±2'				dwg no	
				XXXX *0020/XXX*051	Scale 1:1			sheet 3 of 3	
				dfr H. SUNDY	2004-02-17			size	
				engr H. SUNDY	2004-02-17			A4	
				chr H. SUNDY	2004-02-17			CUSTOMER Drawing	
				appd H. SUNDY	2004-02-17				
sheet	revision								
index	sheet								

B

A

A

B

form: A4mmXc

1

2

3

4