

**IE-FCM-RJ45-C****Weidmüller Interface GmbH & Co. KG**

Klingenbergstraße 26

D-32758 Detmold

Germany

[www.weidmueller.com](http://www.weidmueller.com)Service interface FrontCom<sup>®</sup> Micro with RJ45 in IP65**General ordering data**

Version	FrontCom Micro RJ45 coupling
Order No.	<a href="#">1018790000</a>
Type	IE-FCM-RJ45-C
GTIN (EAN)	4032248730056
Qty.	10 pc(s).

Creation date January 11, 2022 12:25:54 PM CET

Catalogue status 17.12.2021 / We reserve the right to make technical changes.

## IE-FCM-RJ45-C

Weidmüller Interface GmbH &amp; Co. KG

Klingenbergstraße 26

D-32758 Detmold

Germany

www.weidmueller.com

## Technical data

## Dimensions and weights

Wall thickness, min.	1 mm	Wall thickness, max.	3 mm
Net weight	36.4 g		

## Temperatures

Operating temperature	-40 °C...70 °C
-----------------------	----------------

## General data

Tightening torque fixing nut	2 Nm	Connection 1	RJ45
Connection 2	RJ45	Description of article	FrontCom Micro RJ45 coupling
Colour	black	Housing main material	PA UL 94 V0
Category	Cat.6A / Class E <sub>A</sub> (ISO/IEC 11801 2010)	Contact surface	Gold over nickel
Type of mounting	Cabinet, Distribution box	Shielding	360°; shield contact
Protection degree	IP65, in closed state	Plugging cycles	750

## Electrical properties

PoE / PoE+	conforming to IEEE 802.3af
------------	----------------------------

## General standards

Certificate no. (cULus)	E316369	Connector standard	IEC 60603-7-51
-------------------------	---------	--------------------	----------------

## Standards

Connector standard	IEC 60603-7-51
--------------------	----------------

## Classifications

ETIM 6.0	EC001121	ETIM 7.0	EC001121
ETIM 8.0	EC001121	ECLASS 9.0	27-44-03-90
ECLASS 9.1	27-18-90-90	ECLASS 10.0	27-44-03-90
ECLASS 11.0	27-44-03-90		

## Approvals

Approvals



ROHS	Conform
UL File Number Search	E316369

## IE-FCM-RJ45-C

**Weidmüller Interface GmbH & Co. KG**

Klingenbergstraße 26

D-32758 Detmold

Germany

[www.weidmueller.com](http://www.weidmueller.com)

## Technical data

### Downloads

Approval/Certificate/Document of Conformity	<a href="#">DUXR.E316369</a> <a href="#">PROFINET Manufacturer's Declaration</a>
Engineering Data	<a href="#">CAD data – STEP</a>
Engineering Data	<a href="#">EPLAN, WSCAD, Zuken E3.S</a>
User Documentation	<a href="#">MAN IE GUIDE DE</a> <a href="#">MAN IE GUIDE EN</a> <a href="#">Manual</a>
Catalogues	<a href="#">Catalogues in PDF-format</a>
Brochures	<a href="#">FL FIELDWIRING EN</a> <a href="#">PI PROFINET CABLING EN</a>

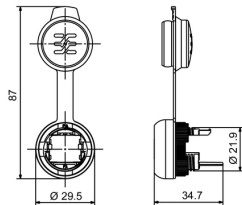
## IE-FCM-RJ45-C

**Weidmüller Interface GmbH & Co. KG**  
Klingenbergstraße 26  
D-32758 Detmold  
Germany

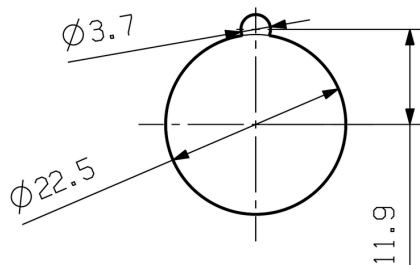
[www.weidmueller.com](http://www.weidmueller.com)

## Drawings

### Dimensioned drawing



### Installation cut-out



## IE-FCM-RJ45-C

Weidmüller Interface GmbH &amp; Co. KG

Klingenbergstraße 26

D-32758 Detmold

Germany

[www.weidmueller.com](http://www.weidmueller.com)

## Accessories

## IE fastening tool



The mounting tool helps you to tighten the locknut when mounting the flange of version 04.

**Comments:**

- Standard tool
- made from tough plastic

## General ordering data

Type	IE-FISP-V4	Version
Order No.	<a href="#">9204370000</a>	Mounting tool
GTIN (EAN)	4032248660780	
Qty.	2 pc(s).	

## straight



Assembled IE cables, patch cable Cabinet Line, Cat. 6, LSZH, grey

## General ordering data

Type	IE-C6FP8LD0010M40M40-D	Version
Order No.	<a href="#">1165940010</a>	Patch cable, RJ45 IP 20, RJ45 IP 20, Cat.6 <sub>A</sub> / Class E <sub>A</sub> (ISO/IEC
GTIN (EAN)	4032248956098	11801 2010), LSZH, 1 m
Qty.	1 pc(s).	

**IE-FCM-RJ45-C****Weidmüller Interface GmbH & Co. KG**

Klingenbergstraße 26

D-32758 Detmold

Germany

[www.weidmueller.com](http://www.weidmueller.com)**Accessories****Blank**

SM is a MultiCard marker for labelling control and signalling devices. The tags are clipped into the carriers or attached by means of the adhesive film already fitted to them. Customised tags can be created with the PrintJet CONNECT or Plotter marking systems.

- Users can quickly produce tags to suit their needs
- No need to stock expensive standard tags
- Highly resistant printing quality when using the PrintJet as a substitute for engraving
- For extreme demands, we recommend the ETO SM protective film
- Holders can be used for the 22-mm or 30-mm-diameter push-buttons from Siemens, ABB, Moeller and Télémécanique

**For custom printing:** Please send us a file of our labeling software M-Print PRO or M-Print PRO Online (without installation) for your labeling specifications.

**General ordering data**

Type	SM 27/18 MC NE WS	Version
Order No.	<a href="#">1699860000</a>	SwitchMark, Device markers, 18 x 27 mm, SwitchMark holder, white
GTIN (EAN)	4008190892302	
Qty.	80 pc(s).	

**IE-FCM-RJ45-C****Weidmüller Interface GmbH & Co. KG**

Klingenbergstraße 26

D-32758 Detmold

Germany

[www.weidmueller.com](http://www.weidmueller.com)**Accessories****Complementary products**

SM is a MultiCard marker for labelling control and signalling devices. The tags are clipped into the carriers or attached by means of the adhesive film already fitted to them. Customised tags can be created with the PrintJet CONNECT or Plotter marking systems.

- Users can quickly produce tags to suit their needs
- No need to stock expensive standard tags
- Highly resistant printing quality when using the PrintJet as a substitute for engraving
- For extreme demands, we recommend the ETO SM protective film
- Holders can be used for the 22-mm or 30-mm-diameter push-buttons from Siemens, ABB, Moeller and Télémécanique

**For custom printing:** Please send us a file of our labeling software M-Print PRO or M-Print PRO Online (without installation) for your labeling specifications.

**General ordering data**

Type	SM-H 27/18 SW	Version
Order No.	<a href="#">1716630000</a>	SwitchMark, Accessories, 48 x 27 mm, black
GTIN (EAN)	4008190343194	
Qty.	25 pc(s).	

## IE-FCM-RJ45-C

Weidmüller Interface GmbH &amp; Co. KG

Klingenbergstraße 26

D-32758 Detmold

Germany

www.weidmueller.com

## Accessories

## Blank



ESG is the tried-and-tested marker in MultiCard format for use on many well-known electrical devices. The result is high-quality device marking with a high-contrast appearance.

Various types are available for devices from manufacturers like Siemens, ABB, Beckhoff etc.

Advantages at a glance:

- Tags for universal usage, self-adhesive or clip-on tags, depending on type
- For aligned equipment, e.g. circuit breakers, we supply ESG markers for clipping onto tag rails
- Individual laser-quality printing according to specifications

**For custom printing:** Please send us a file of our labeling software M-Print PRO or M-Print PRO Online (without installation) for your labeling specifications.

## General ordering data

Type	ESG 9/11 K MC NE WS	Version
Order No.	<a href="#">1857440000</a>	ESG, Device markers x 11 mm, PA 66, Colour: white, Self-adhesive
GTIN (EAN)	4032248402731	
Qty.	200 pc(s).	

## Cable-lug sleeves



### Insulated tab-connector sleeves made from PVC with copper sleeve

- Commercially available designs
- Not soldered
- With conical entry funnel

## General ordering data

Type	LIF 1,5F288 R	Version
Order No.	<a href="#">9200520000</a>	cable lug, terminal end, Insulated cable connector, 1.5 mm <sup>2</sup> , 0.5 mm <sup>2</sup> -
GTIN (EAN)	4032248410361	1.5 mm <sup>2</sup>
Qty.	100 pc(s).	



# Mouser Electronics

Authorized Distributor

Click to View Pricing, Inventory, Delivery & Lifecycle Information:

[Weidmuller:](#)

[1018790000](#)