

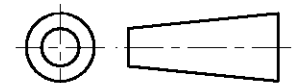
DO NOT SCALE

DIMENSIONS IN mm

METRIC

THIRD ANGLE

PROJECTION



NOTES

- 1 NO BEAT IN LOCKING LANCE REQUIRED.
- 2 FOR HIGHER EXTRACTION FORCE APPLICATION.
- 3 OBSOLETE PARTS: OBSOLETE CIS STREAMLINING PER D.RENAUD/D.SINISI

GENERAL TOLERANCES ± 0.3

3 OBSOLETE		PRE-TINPLATED	PH. BRONZE	6-160526-8	
		PRE-TINPLATED	BRASS	6-160526-7	
	2/1	UNPLATED	BRASS	9-160526-4	
		TINPLATED	PH. BRONZE	6-160526-2	
		SILVERPLATED	BRASS	6-160526-1	
		SILVERPLATED	PH. BRONZE	6-160526-0	
		TINPLATED	PH. BRONZE	5-160526-9	
		UNPLATED	PH. BRONZE	5-160526-8	
		TINPLATED	BRASS	5-160526-7	
		UNPLATED	BRASS	5-160526-6	
		TINPLATED	PH. BRONZE	160526-4	
NOTES		FINISH	MATERIAL	PART NUMBER	REV

CUSTOMER DRAWING FOR REFERENCE ONLY
WILL NOT BE UPDATED

THIS DRAWING IS UNPUBLISHED
RELEASED FOR PUBLICATION ,10

STE TE Connectivity

NAME
FASTIN-FASTON® Connector,
.250" sr. REC. CONTACT.

DWG. No. C-160526
REV. LTR. AL3
SHEET 1 OF 1
A3

AL3	REVISED PER ECO-11-005140		RK	HMR	01APR11
LTR.	REVISION RECORD		DR.	CHK.	DATE
DR. : J.v.LIEMPT.		CHK. : A.BIJNEN.		APP. : L.v.SOEST.	
DATE: 23 MAR 1992		DATE: -		DATE: -	

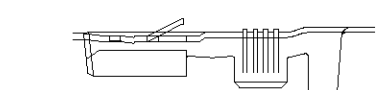
WIRE RANGE :

0,5-1,5 mm²

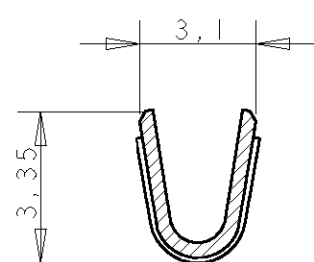
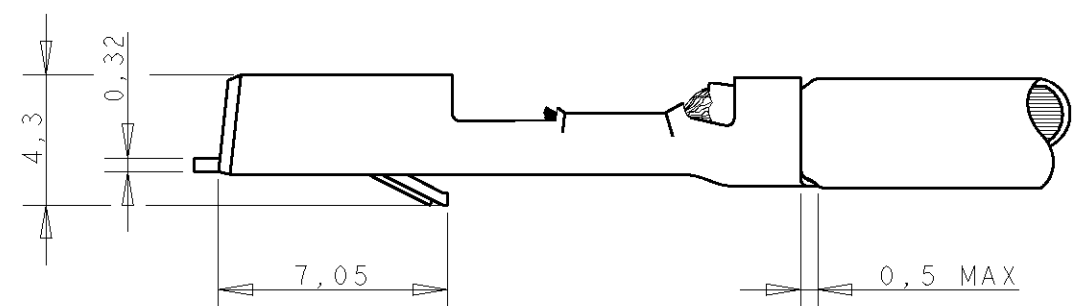
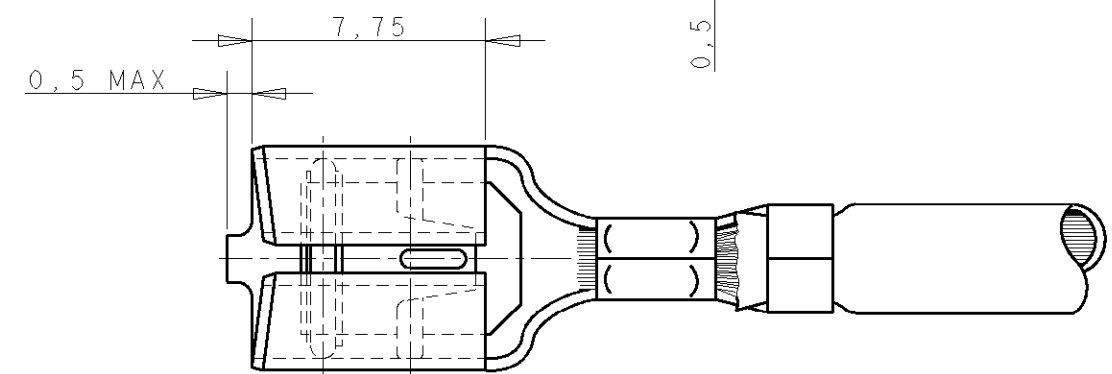
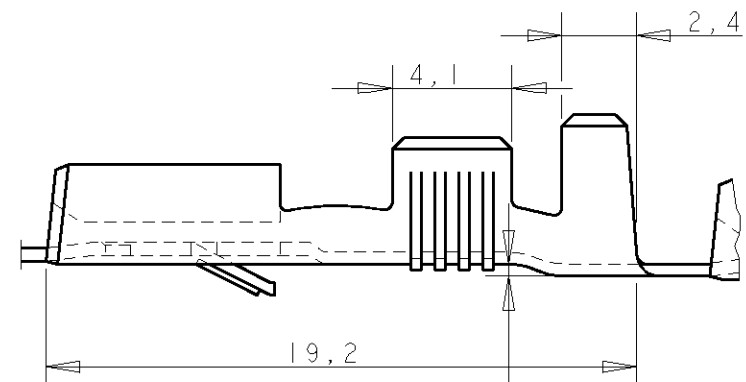
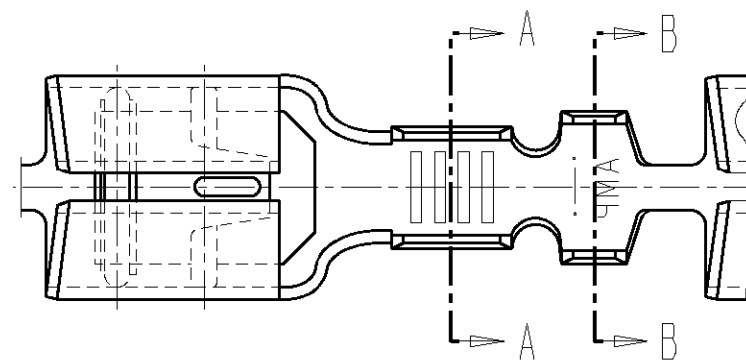
INSULATION RANGE :

2,3-3,3mm DIA.

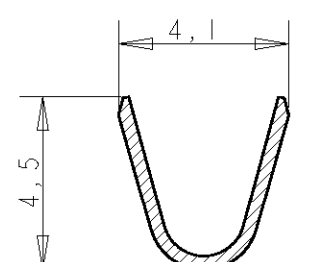
DIRECTION OFF TOP OF REEL



Terminal "U" down.



SECTION A-A



SECTION B-B

Mouser Electronics

Authorized Distributor

Click to View Pricing, Inventory, Delivery & Lifecycle Information:

[TE Connectivity:](#)

[6-160526-2](#)